

# Release Notes Limecraft 2024.1

- Introduction** **1**
- New and Extended Features** **2**
  - Enhanced operating mode for Transcription services 2
  - 3D Viewer 2
- Enhanced Functionality** **3**
  - Improved workspace listing 3
  - Additional languages for Translation 4
  - Additional enhancements 5
- Specific Fixes and Corrections** **6**

## Introduction

Limecraft’s first release in 2024 (2024.1) is scheduled for delivery to Limecraft’s online platform on February 6th, making available to its users the following set of new and extended functions, improvements and specific corrections.

# New and Extended Features

## Enhanced operating mode for Transcription services

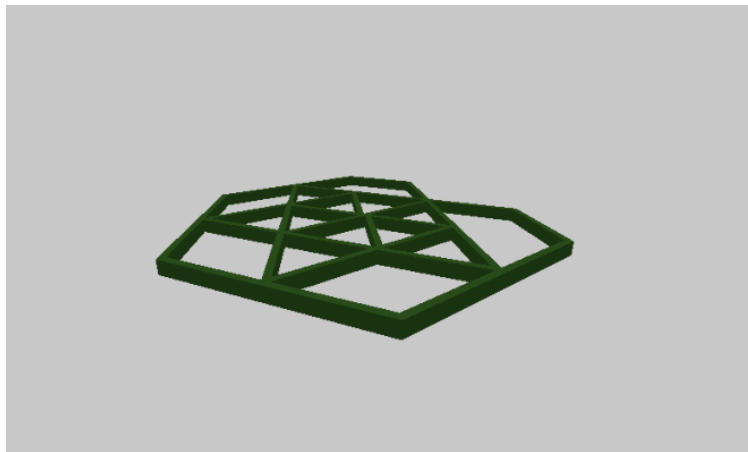
For specific Transcription Services, we now support the 'enhanced' operating mode in addition to the existing 'standard' operating mode, with

- Standard: optimized for fast turnaround time
- Enhanced: optimized for the highest accuracy.

Standard being the default mode, and Enhanced available upon specific activation.

## 3D Viewer

With this release, support has been added for (3D) viewing GLB files.



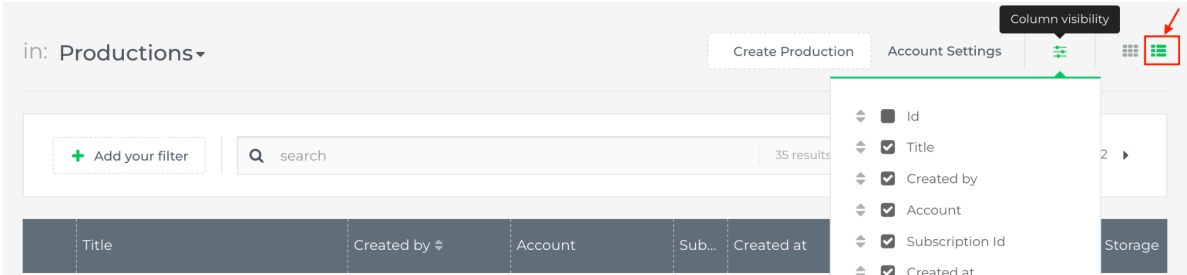
A GLB (GL Transmission Format Binary) file is a standardized file format used to share 3D data. More specifically, it is a binary format representing GLTF (GL Transmission Format) files.

# Enhanced Functionality

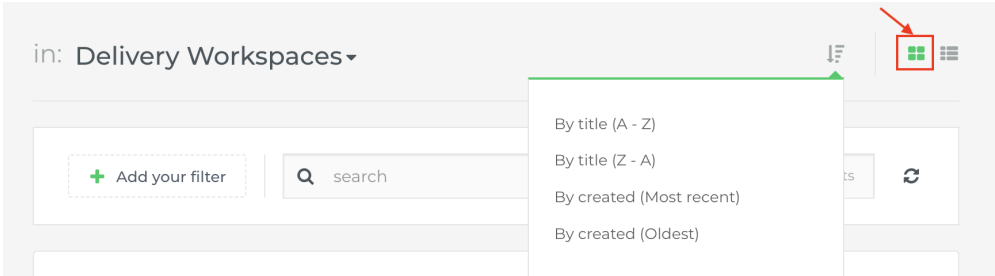
## Improved workspace listing

With this release, additional options are provided for displaying a list of workspaces (e.g. within an account with multiple workspaces).

On such workspace overview, it is now possible to switch to a list view. This view allows you to select which columns to include and the resulting columns can be sorted by clicking on them.



The thumbnail view for workspace overviews is still available, and now also includes basic sort functions.



## Additional languages for Translation

The set of languages available for translation has been extended with the following (upon specific activation):

- Assemese
- Aymara
- Bambara
- Bhojpuri
- Dhivehi
- Dogri
- Ewe
- Filipino
- Guarani
- Ilocano
- Konkani
- Krio
- Kurdish
- Lingala
- Luganda
- Maithili
- Meiteilon
- Mizo
- Ormo
- Quechua
- Sanskrit
- Sepedi
- Tigrinya
- Tsonga
- Twi

## Additional enhancements

- When (bulk) downloading all clips from a share, the resulting (zip) file now has a more appropriate (flat list) structure.
- Timing information included in translation (and subsequent subtitling) results has now been improved.
- Ingest processing for non-JPG images is now limited to 16k x 12k resolution. While ingest of higher resolutions previously failed silently, this is now more properly reflected on the corresponding workflow status.

## Specific Fixes and Corrections

- (NL-6392) The issue affecting HEIC image types has now been resolved.
- (NL-6371) The issue causing specific workflows to fail on items not attached to a collection has now been corrected.
- (NL-6370) Cloned collections will now be automatically visible in the target workspace
- (NL-6369) Subtitle burn-in can now also be properly applied to web proxies.
- (NL-6364) When creating subclips in sequence, the setting of the start Time Code of each subclip is now properly handled.
- (NL-6354) Deleted productions will no longer appear in search results
- (NL-6187) It is again possible to adjust the background opacity in subtitle presets.
- Audio-mixing (master audio tracks) for audio-synced clips has now been corrected (using Limecraft Edge)