

Limecraft Sharing - Updated

Table of Contents

Introduction	2
Creating Shared Links	2
Sharing clips, sets of clips or collections	2
Remembering share recipients	4
Setting more granular link expiry details	4
Reviewing Shared Content	5
Accessing shared links	5
Shared content overview	6
Viewing and reviewing shared clips	7
Clip navigation	9

Introduction

Limecraft's sharing functionality helps you share individual clips or collections of material with third parties easily and securely, without granting them full access to your Workspaces. Sharing settings enables you to give permissions to download all or specific versions of clips, to give feedback in the form of comments or approval, or to return modified versions from the shared link.

This sharing functionality, commonly referred to as 'shared links', is an important and popular part of the Limecraft platform because it enables valuable real-time collaboration across remote teams.

With the forthcoming 24.2 version, scheduled to be released on 26th March, Limecraft will significantly improve the design of this key element of platform functionality.

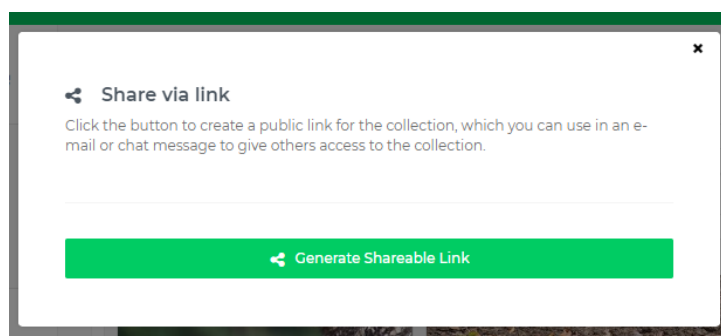
In this document we will highlight the differences in look and feel of shared links as well as some specific extensions, before and after the 24.2 release.

Creating Shared Links

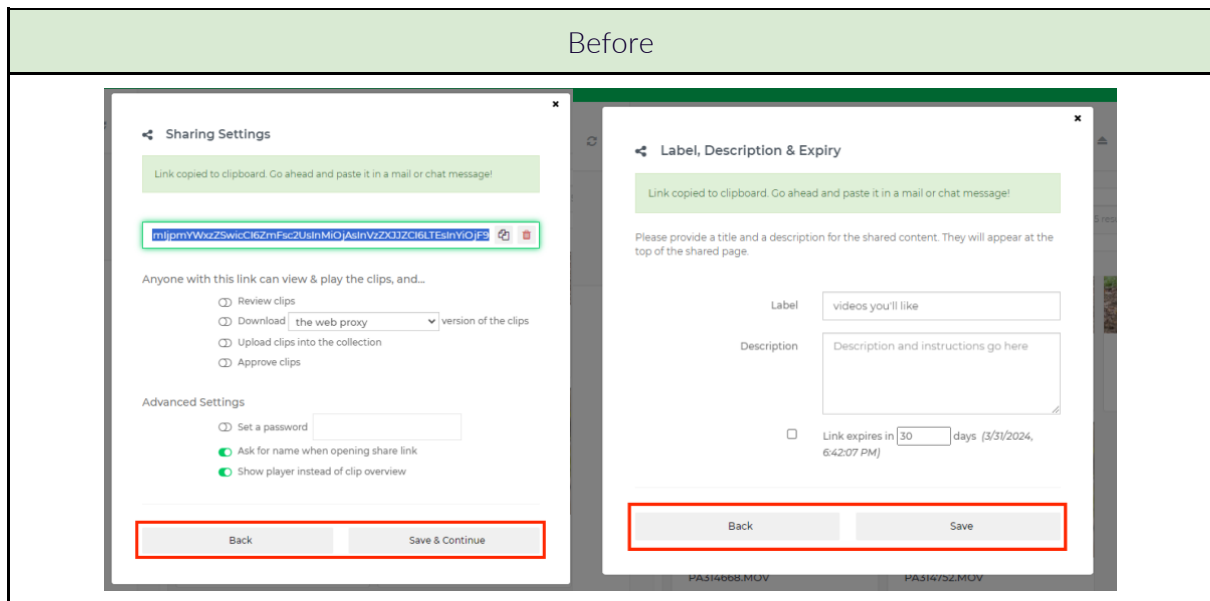
Sharing clips, sets of clips or collections.

The actions to share clips, sets of clips or collections remain available as before.

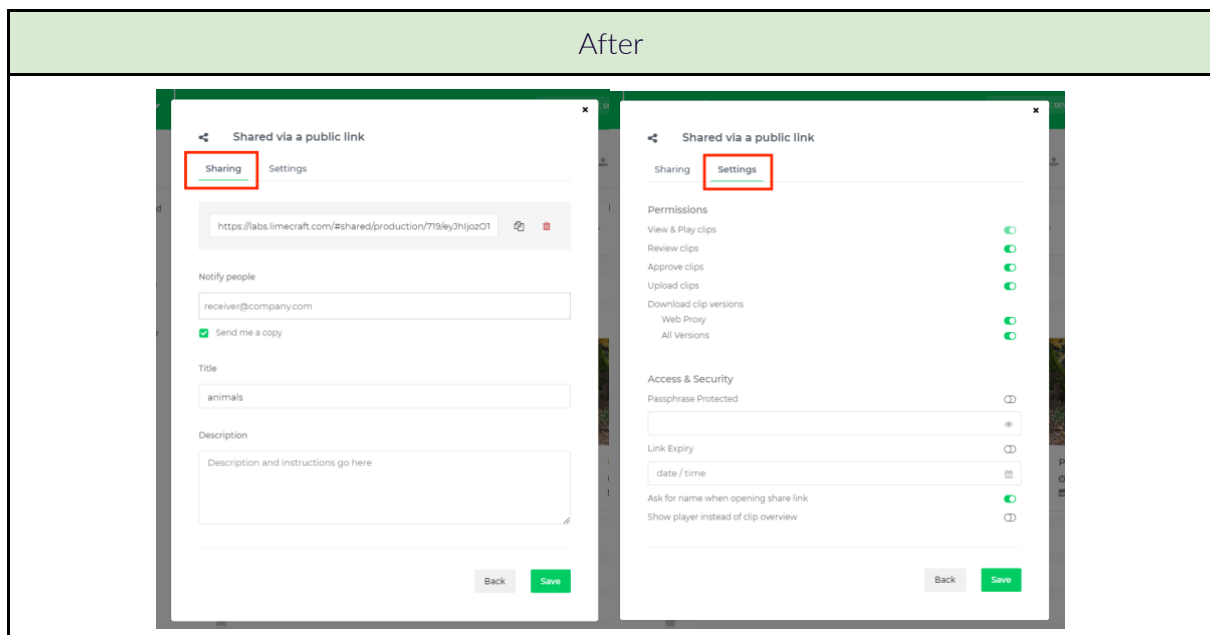
Selecting the share function will cause the following pop-up window to appear (as before):



Clicking 'Generate Shareable link' continues the setup for the shared link, where you will encounter the following design changes:



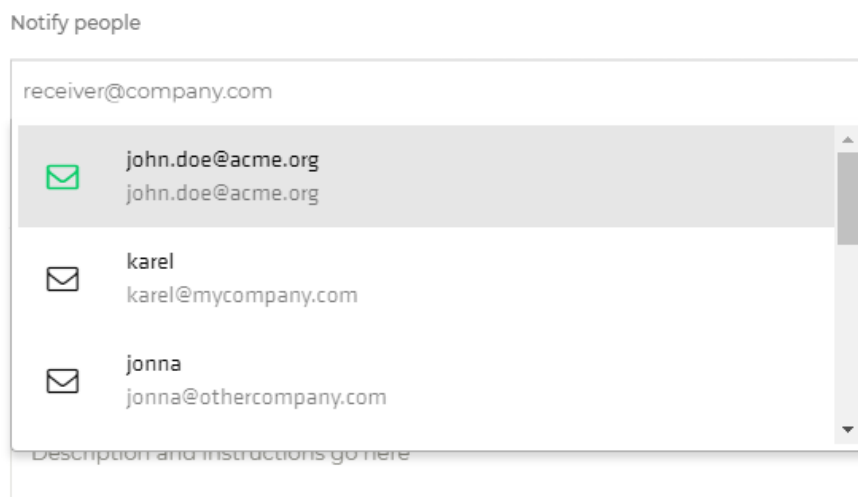
Instead of having to go through the setup screens in a step-by-step manner, the new setup screen organises all configuration options across tabs.



Remembering share recipients.

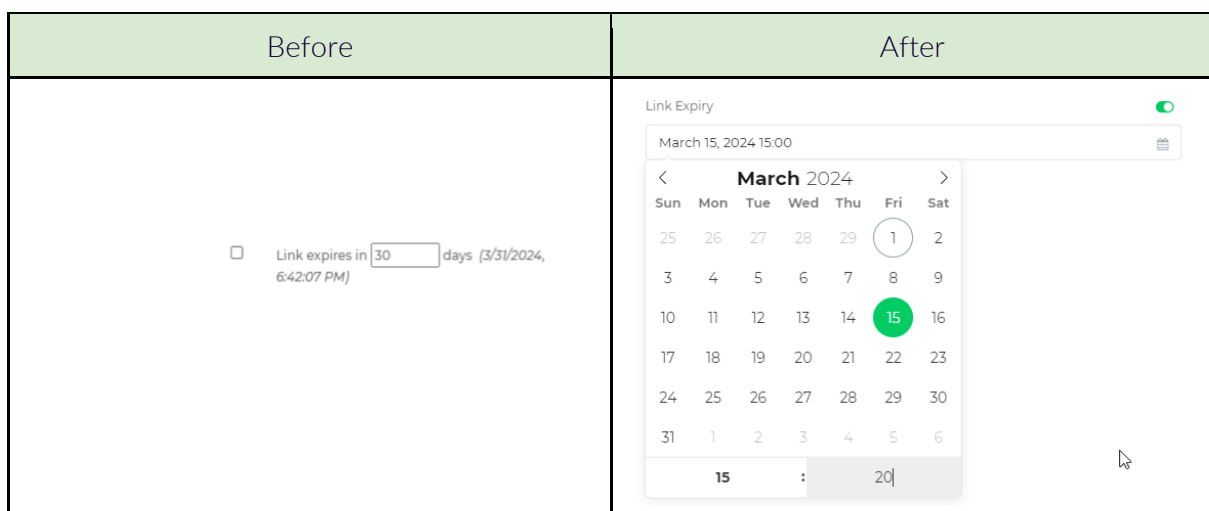
To help ease the process of adding lists of collaborators to each of the shared links, release 24.2 makes it possible to apply auto-complete suggestions when entering recipients for the shared link.

These suggestions are based on recipient-email addresses previously entered by you using the same browser and the email addresses of people active in your specific workspace.



Setting more granular link expiry details

Configuring your shared link to expire at a precise moment has been made easier by the addition of a date-picker component, as well as by allowing a specific time to be selected:



Reviewing Shared Content

When you receive a request to collaborate on content shared from a Limecraft workspace, you will begin by clicking on the shared link provided.

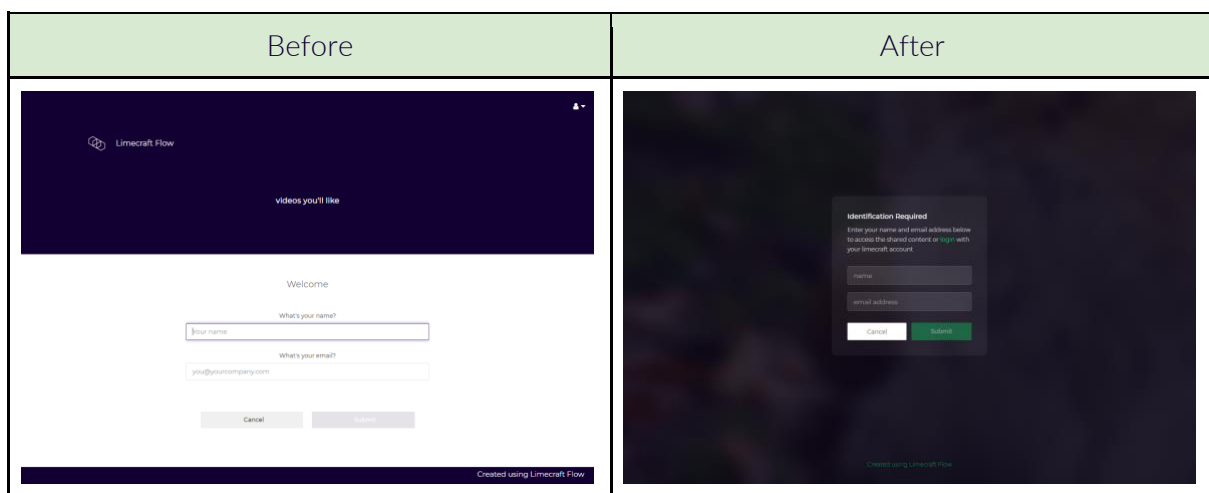
Here you will also notice design changes applied by Limecraft 24.2.

First of all, you will notice the use of a darker theme across all screens.

Accessing shared links.

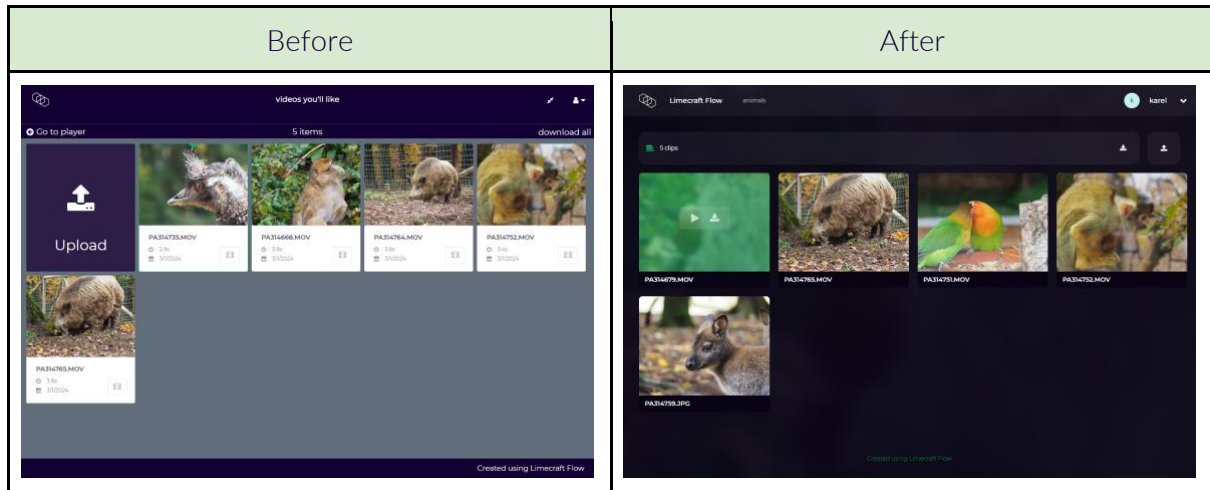
Based on the access options configured for the shared link (e.g. password protected, ask for name), you will click on the link provided and then be prompted to enter the appropriate details.

Apart from an improved look and feel, it is now also possible to identify yourself using your existing Limecraft user account (when applicable).

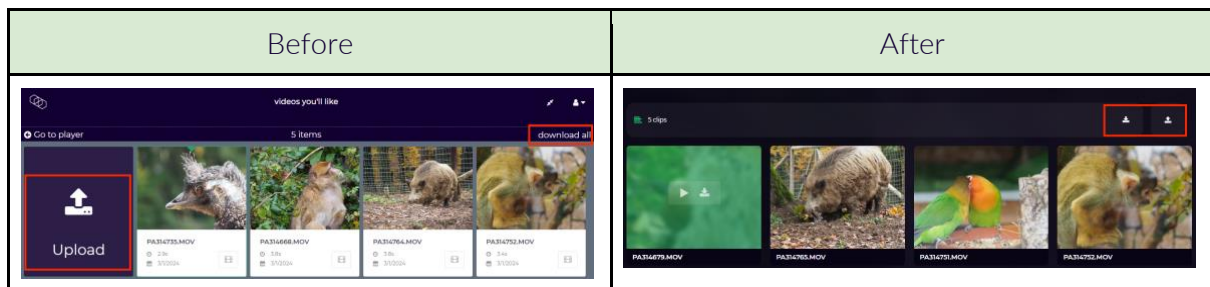


Shared content overview.

The updated design has also been extended to the overview page for shared content:

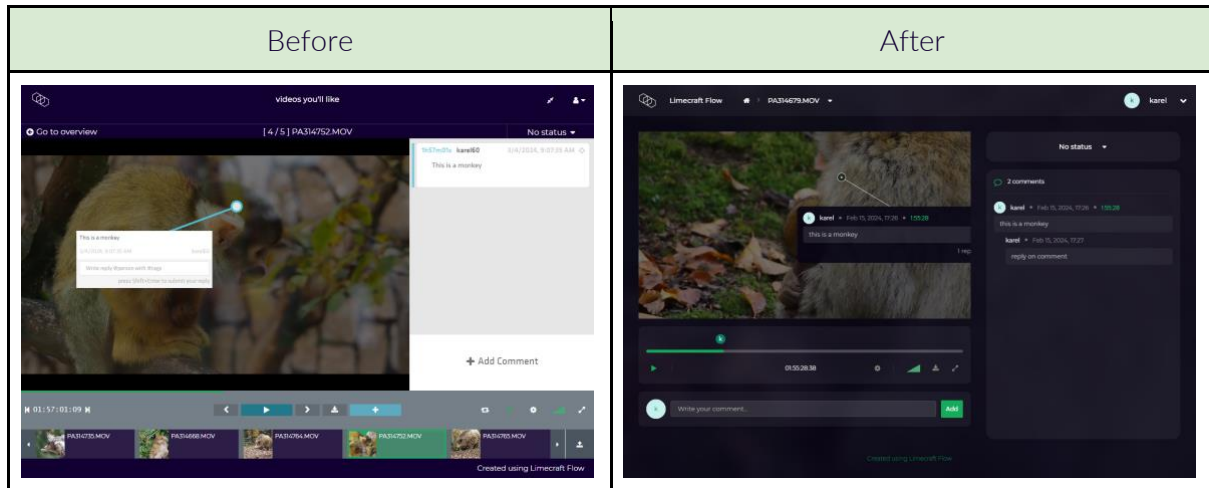


In particular, the upload and download functions have now been integrated in the toolbar (top right):



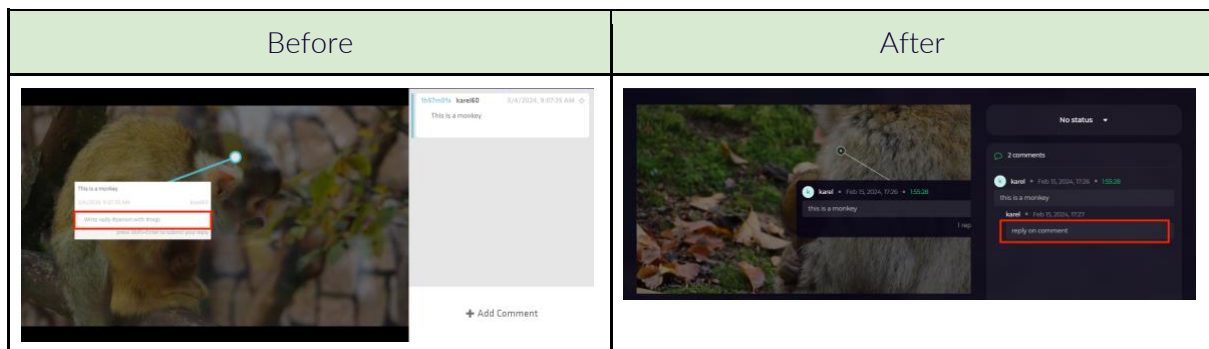
Viewing and reviewing shared clips.

Clicking on a clip from the overview page will bring you to the detail page for that clip.

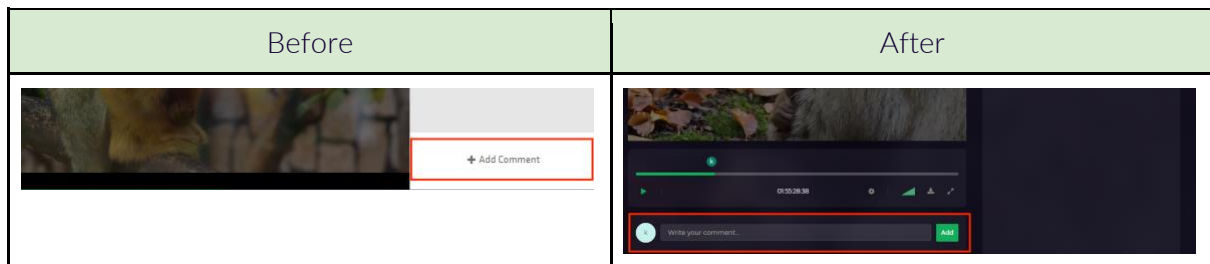


The display of (review) comments has been optimised for clarity and concision, both for the comment overlay on the video and for the comment sidebar.

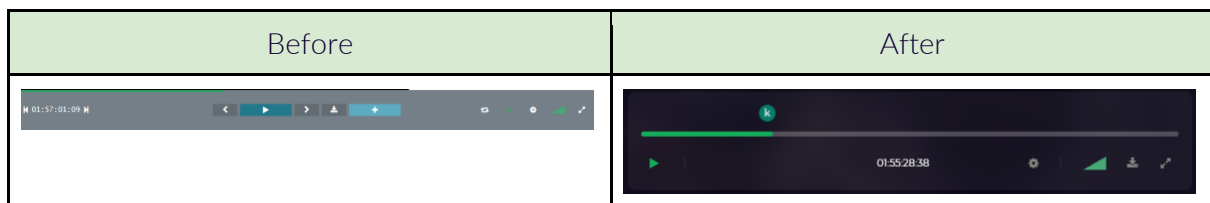
Replies to comments are no longer shown nor can they be entered on the video display itself; replying to comments and editing comments are now handled within the comments sidebar.



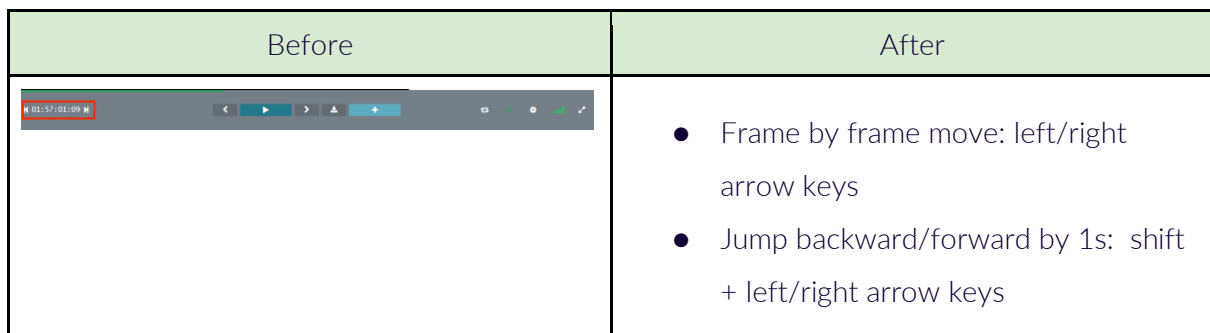
On the other hand, the ability to add a new comment has been moved from the sidebar to the area below the player controls for improved visibility.



As part of the redesign, the player controls have been simplified.

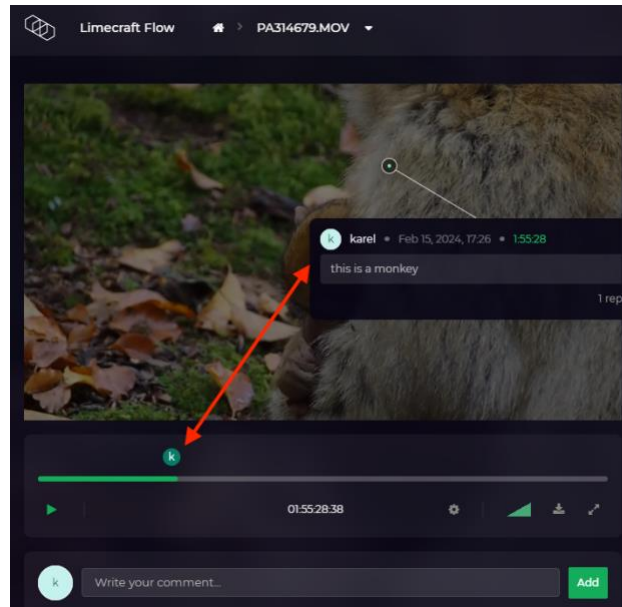


Most notably, forward/backward move buttons are no longer available in the player for shared content and are replaced by short-cut keys.



As another part of the new design, the player scrubber bar will display small circle indicators to mark locations where comments have been included in the video.

Clicking these indicators will highlight the corresponding comments within the video and sidebar.



Clip navigation.

Navigating between clips within a share was previously handled at the bottom of the clip details screen. In 24.2, this is now hidden by default and can be activated at the top of the screen by clicking the clip title. Navigating using the keyboard is also now possible: press the down arrow key to open the clip navigation, then use left and right arrow keys to navigate through it. Use the up arrow key to close the clip navigation again.

